

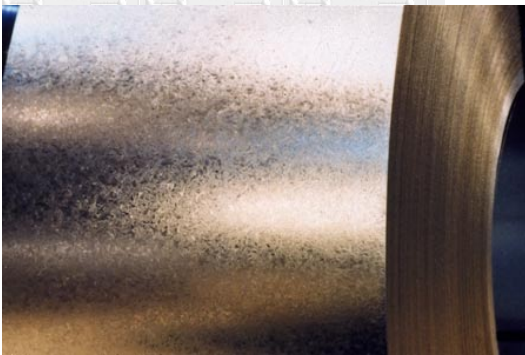
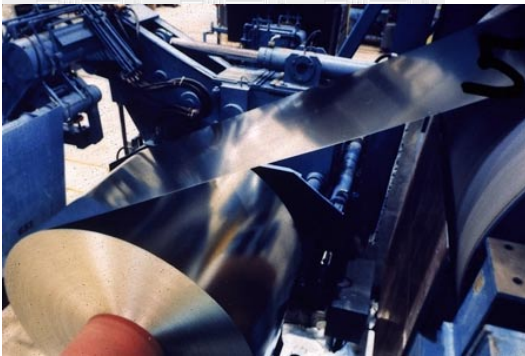
# isXML: Inventory Advice

---

## An Industry Document Guideline for Metal Transactions

# American Iron & Steel Institute

*April 2001*



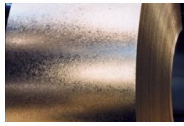
**DRAFT – Release 0.1**



*Published / Revised*

*5/2/2001*

*Printed*  
*05/02/2001*



## Table of Contents

| <b>Topic</b>                            | <b>Page</b> |
|---|-------------|
| Background .....                        | 1           |
| Transaction Description and Usage ..... | 2           |
| Class Relationships.....                | 3           |
| Document Structure .....                | 4           |
| isXML DTD .....                         | 5           |
| Examples .....                          | 6           |
| Example: Source Document .....          | 7           |
| Example: Machine-Based Version .....    | 8           |
| Example: Text-Based Version.....        | 15          |
| Appendices .....                        | 21          |



## Background

This document is intended to describe the ‘payload’ section of an XML-formatted ‘Inventory Advice’ message. Message routing structures are not currently a part of these guidelines.

The **structure** of the AISI XML message is as follows:

isXML DTD

1. Interchange level (described in ‘Draft V0001 – Control.doc)
2. Transaction level
  - 2.1. Control (described in ‘Draft V0001 – Control.doc)
  - 2.2. Data Area
    - 2.2.1. Header
    - 2.2.2. Detail

As part of the methodology used to develop these guidelines, the work group mapped transaction data requirements, grouped like elements together as ‘classes’ or common components, and structured the document.

The section labeled ‘**Class Relationships**’ diagrams the document structure in terms of the identified classes or components. The section labeled ‘**Document Structure**’ further outlines the hierarchical structure of the message.

The ‘**isXML DTD**’ portion of the guideline contains the message DTD. The common class definitions have been ‘included’ in the DTD and are described in ‘Draft V0001 – Overview.doc’.

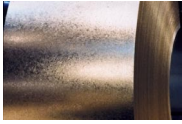
A number of sections in the guideline have been reserved for ‘examples’. The ‘source document’ is a representation of a paper document used to derive the example. The ‘machine version’ example is a fully extended version of the XML which would be used where sophisticated systems are communicating and have access to industry and society codes and table structures. Finally, the ‘text version’ example is used for a lower-tech implementation where codes and tables need not be referenced.

A tag dictionary is included in ‘Draft V0001 – Overview.doc’.



## **Transaction Description and Usage**

This draft guideline contains the format and establishes the data content for the inventory advice transaction set. This transaction is used for business entities to provide inventory information to another.



## Class Relationships

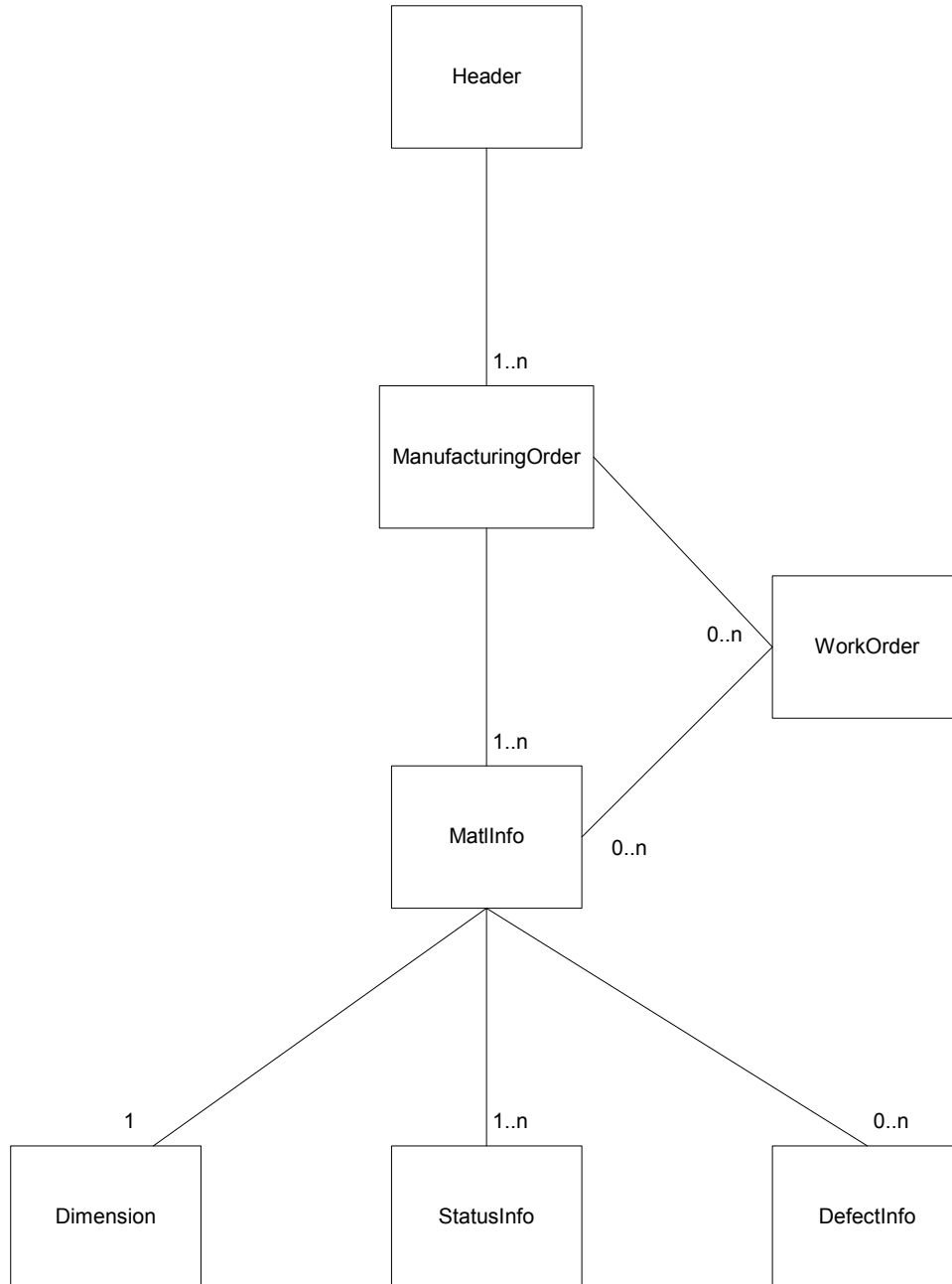
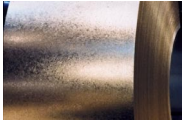


Figure 1



## Document Structure

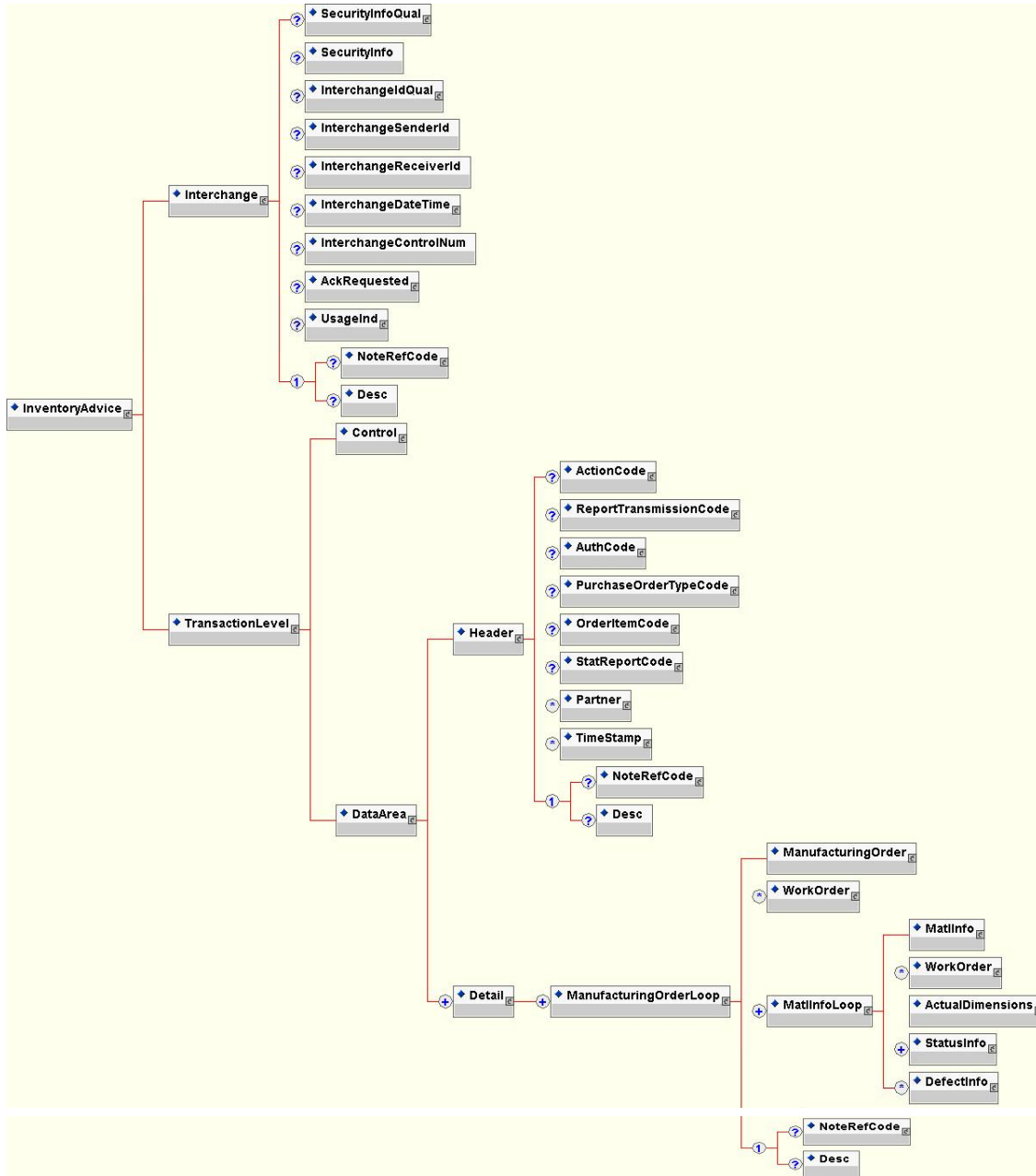


Figure 2



## isXML DTD

```
<?xml version="1.0" encoding="UTF-8"?>
<!ENTITY % classcommon.dtd SYSTEM "classcommon.dtd">
%classcommon.dtd;
<!ELEMENT InventoryAdvice (Interchange, TransactionLevel)>
<!-- Document Definition has envelope information and transaction information -->
<!ELEMENT TransactionLevel (Control, DataArea)>
<!ELEMENT DataArea (Header, Detail+)>
<!ELEMENT Detail (ManufacturingOrderLoop+)>
<!ELEMENT ManufacturingOrderLoop (ManufacturingOrder, WorkOrder*, MatlInfoLoop+, Note*)>
<!ELEMENT MatlInfoLoop (MatlInfo, WorkOrder*, ActualDimensions, StatusInfo+, DefectInfo*)>
<!ELEMENT ActualDimensions (%Dimension;)>
```



## **Examples**

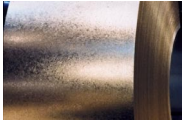
The following are examples of the actual inventory advice transaction in use. You will see a sample source document followed by both a machine-based and a text-based isXML example that matches the source document



## Inventory Advice

### Example: Source Document

| Partner Processor |                | PROCINVN<br>Current Inventory<br>OP NAME : STEEL PROCESSOR |       |         |       | 17-Apr-01<br>8:03:08<br>Sort by: SUPL ID |  |
|-------------------|----------------|--|-------|---------|-------|--|--|
| SUPL ID           | OP MATERIAL ID | ORDER/ITEM   | WGT   | ACTDT   | CLASS | OP                                       |  |
| A123704           | A123704        | AB12300 1  | 22770 | 1-29-01 | 1     | IP                                       |  |
| A123705           | A123705-1      | AB12300 1  | 5100  | 4-02-01 | 1     | AV                                       |  |
|                   | A123705-2      | AB12300 1  | 5100  | 4-02-01 | 1     | AV                                       |  |
|                   | A123705-3      | AB12300 1  | 5100  | 4-02-01 | 1     | AV                                       |  |
|                   | A123705-4      | AB12300 1  | 5100  | 4-02-01 | 1     | AV                                       |  |
| A123706           | A123706        | AB12300 1  | 23280 | 1-29-01 | 1     | IP                                       |  |
| A123707           | A123707        | AB12300 1  | 23180 | 1-29-01 | 1     | IP                                       |  |
| A123708           | A123708        | AB12300 1  | 22870 | 1-29-01 | 1     | IP                                       |  |

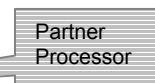


---

## Example: Machine-Based Version

---

```
<?xml version="1.0" encoding="UTF-8"?>
<!DOCTYPE InventoryAdvice SYSTEM "InventoryAdvice.dtd">
<InventoryAdvice>
  <Interchange/>
  <TransactionLevel>
    <Control/>
    <DataArea>
      <Header>
        <ActionCode>
          <AgencyQualCode>AX</AgencyQualCode>
          <TableNum>306</TableNum>
          <CodeValue>5</CodeValue>
          <Desc>Send</Desc>
        </ActionCode>
        <ReportTransmissionCode>
          <AgencyQualCode>AX</AgencyQualCode>
          <TableNum>756</TableNum>
          <CodeValue>9</CodeValue>
          <Desc>Electronic Mail</Desc>
        </ReportTransmissionCode>
      </Header>
      <Detail>
        <ManufacturingOrderLoop>
          <ManufacturingOrder>
            <MillOrderNum>AB12300</MillOrderNum>
            <MillOrderItem>1</MillOrderItem>
            <Partner PartnerType="Processor">
              <Name>STEEL PROCESSOR</Name>
              <Addr1>123 MAIN STREET</Addr1>
              <CityName> ANY TOWN</CityName>
              <PostalCode>12345</PostalCode>
              <CountryCode>
                <Desc>USA</Desc>
              </CountryCode>
            </Partner>
            <Partner PartnerType="Supplier">
              <Name>STEEL SUPPLIER</Name>
              <Addr1>123 OLD STREET</Addr1>
              <CityName> OTHER TOWN</CityName>
              <PostalCode>12346</PostalCode>
              <CountryCode>
                <Desc>USA</Desc>
              </CountryCode>
            </Partner>
            <TimeStamp TimeStampType="Inventory">
              <Date>2001.4.17</Date>
            </TimeStamp>
          </ManufacturingOrder>
        </ManufacturingOrderLoop>
      </Detail>
    </DataArea>
  </TransactionLevel>
</InventoryAdvice>
```





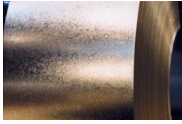
---

## Example: Machine-Based Version (con't)

---

```
<Time>8:03:08</Time>
</TimeStamp>
</ManufacturingOrder>
<MatlInfoLoop>
  <MatlInfo>
    <MatlId MatlIdType="Producer">A123704</MatlId>
    <MatlId MatlIdType="Processor">A123704</MatlId>
  </MatlInfo>
  <ActualDimensions>
    <Weight>
      <MeasValue>22770</MeasValue>
      <UnitOrBasisForMeasCode>
        <AgencyQualCode>AX</AgencyQualCode>
        <TableNum>355</TableNum>
        <CodeValue>LB</CodeValue>
        <Desc>POUNDS</Desc>
      </UnitOrBasisForMeasCode>
    </Weight>
  </ActualDimensions>
  <StatusInfo>
    <MatlClass>
      <AgencyQualCode>ST</AgencyQualCode>
      <TableNum>67</TableNum>
      <CodeValue>1</CodeValue>
      <Desc>PRIME</Desc>
    </MatlClass>
    <Status StatusType="Processor">
      <AgencyQualCode>ST</AgencyQualCode>
      <TableNum>70</TableNum>
      <CodeValue>7</CodeValue>
      <Desc>INPROCESS</Desc>
    </Status>
    <TimeStamp TimeStampType="Activity">
      <Date>2001.1.29</Date>
    </TimeStamp>
  </StatusInfo>
</MatlInfoLoop>
<MatlInfoLoop>
  <MatlInfo>
    <MatlId MatlIdType="Producer">A123705</MatlId>
    <MatlId MatlIdType="Processor">A123705-1</MatlId>
  </MatlInfo>
  <ActualDimensions>
    <Weight>
      <MeasValue>5100</MeasValue>
      <UnitOrBasisForMeasCode>
        <AgencyQualCode>AX</AgencyQualCode>
        <TableNum>355</TableNum>
        <CodeValue>LB</CodeValue>

```

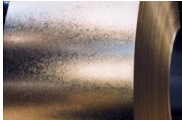


---

### Example: Machine-Based Version (con't)

---

```
        <Desc>POUNDS</Desc>
      </UnitOrBasisForMeasCode>
    </Weight>
  </ActualDimensions>
  <StatusInfo>
    <MatlClass>
      <AgencyQualCode>ST</AgencyQualCode>
      <TableNum>67</TableNum>
      <CodeValue>1</CodeValue>
      <Desc>PRIME</Desc>
    </MatlClass>
    <Status StatusType="Processor">
      <AgencyQualCode>ST</AgencyQualCode>
      <TableNum>70</TableNum>
      <CodeValue>8</CodeValue>
      <Desc>PROCESSING COMPLETE</Desc>
    </Status>
    <TimeStamp TimeStampType="Activity">
      <Date>2001.4.02</Date>
    </TimeStamp>
  </StatusInfo>
</MatlInfoLoop>
<MatlInfoLoop>
  <MatlInfo>
    <MatlId MatlIdType="Producer">A123705</MatlId>
    <MatlId MatlIdType="Processor">A123705-2</MatlId>
  </MatlInfo>
  <ActualDimensions>
    <Weight>
      <MeasValue>5100</MeasValue>
      <UnitOrBasisForMeasCode>
        <AgencyQualCode>AX</AgencyQualCode>
        <TableNum>355</TableNum>
        <CodeValue>LB</CodeValue>
        <Desc>POUNDS</Desc>
      </UnitOrBasisForMeasCode>
    </Weight>
  </ActualDimensions>
  <StatusInfo>
    <MatlClass>
      <AgencyQualCode>ST</AgencyQualCode>
      <TableNum>67</TableNum>
      <CodeValue>1</CodeValue>
      <Desc>PRIME</Desc>
    </MatlClass>
    <Status StatusType="Processor">
      <AgencyQualCode>ST</AgencyQualCode>
      <TableNum>70</TableNum>
      <CodeValue>8</CodeValue>
    </Status>
  </StatusInfo>
</MatlInfoLoop>
```

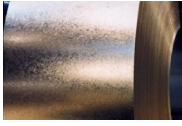


---

### Example: Machine-Based Version (con't)

---

```
        <Desc>PROCESSING COMPLETE</Desc>
    </Status>
    <TimeStamp TimeStampType="Activity">
        <Date>2001.4.02</Date>
    </TimeStamp>
</StatusInfo>
</MatlInfoLoop>
<MatlInfoLoop>
    <MatlInfo>
        <MatlId MatlIdType="Producer">A123705</MatlId>
        <MatlId MatlIdType="Processor">A123705-3</MatlId>
    </MatlInfo>
    <ActualDimensions>
        <Weight>
            <MeasValue>5100</MeasValue>
            <UnitOrBasisForMeasCode>
                <AgencyQualCode>AX</AgencyQualCode>
                <TableNum>355</TableNum>
                <CodeValue>LB</CodeValue>
                <Desc>POUNDS</Desc>
            </UnitOrBasisForMeasCode>
        </Weight>
    </ActualDimensions>
    <StatusInfo>
        <MatlClass>
            <AgencyQualCode>ST</AgencyQualCode>
            <TableNum>67</TableNum>
            <CodeValue>1</CodeValue>
            <Desc>PRIME</Desc>
        </MatlClass>
        <Status StatusType="Processor">
            <AgencyQualCode>ST</AgencyQualCode>
            <TableNum>70</TableNum>
            <CodeValue>8</CodeValue>
            <Desc>PROCESSING COMPLETE</Desc>
        </Status>
        <TimeStamp TimeStampType="Activity">
            <Date>2001.4.02</Date>
        </TimeStamp>
    </StatusInfo>
</MatlInfoLoop>
<MatlInfoLoop>
    <MatlInfo>
        <MatlId MatlIdType="Producer">A123705</MatlId>
        <MatlId MatlIdType="Processor">A123705-4</MatlId>
    </MatlInfo>
    <ActualDimensions>
        <Weight>
            <MeasValue>5100</MeasValue>
```

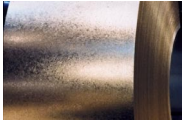


---

### Example: Machine-Based Version (con't)

---

```
<UnitOrBasisForMeasCode>
  <AgencyQualCode>AX</AgencyQualCode>
  <TableNum>355</TableNum>
  <CodeValue>LB</CodeValue>
  <Desc>POUNDS</Desc>
</UnitOrBasisForMeasCode>
</Weight>
</ActualDimensions>
<StatusInfo>
  <MatlClass>
    <AgencyQualCode>ST</AgencyQualCode>
    <TableNum>67</TableNum>
    <CodeValue>1</CodeValue>
    <Desc>PRIME</Desc>
  </MatlClass>
  <Status StatusType="Processor">
    <AgencyQualCode>ST</AgencyQualCode>
    <TableNum>70</TableNum>
    <CodeValue>8</CodeValue>
    <Desc>PROCESSING COMPLETE</Desc>
  </Status>
  <TimeStamp TimeStampType="Activity">
    <Date>2001.4.02</Date>
  </TimeStamp>
</StatusInfo>
</MatlInfoLoop>
<MatlInfoLoop>
  <MatlInfo>
    <MatlId MatlIdType="Producer">A123706</MatlId>
    <MatlId MatlIdType="Processor">A123706</MatlId>
  </MatlInfo>
  <ActualDimensions>
    <Weight>
      <MeasValue>23280</MeasValue>
      <UnitOrBasisForMeasCode>
        <AgencyQualCode>AX</AgencyQualCode>
        <TableNum>355</TableNum>
        <CodeValue>LB</CodeValue>
        <Desc>POUNDS</Desc>
      </UnitOrBasisForMeasCode>
    </Weight>
  </ActualDimensions>
  <StatusInfo>
    <MatlClass>
      <AgencyQualCode>ST</AgencyQualCode>
      <TableNum>67</TableNum>
      <CodeValue>1</CodeValue>
      <Desc>PRIME</Desc>
    </MatlClass>
```

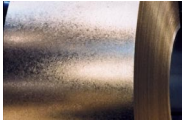


---

### Example: Machine-Based Version (con't)

---

```
<Status StatusType="Processor">
  <AgencyQualCode>ST</AgencyQualCode>
  <TableNum>70</TableNum>
  <CodeValue>7</CodeValue>
  <Desc>INPROCESS</Desc>
</Status>
<TimeStamp TimeStampType="Activity">
  <Date>2001.1.29</Date>
</TimeStamp>
</StatusInfo>
</MatlInfoLoop>
<MatlInfoLoop>
  <MatlInfo>
    <MatlId MatlIdType="Producer">A123707</MatlId>
    <MatlId MatlIdType="Processor">A123707</MatlId>
  </MatlInfo>
  <ActualDimensions>
    <Weight>
      <MeasValue>23180</MeasValue>
      <UnitOrBasisForMeasCode>
        <AgencyQualCode>AX</AgencyQualCode>
        <TableNum>355</TableNum>
        <CodeValue>LB</CodeValue>
        <Desc>POUNDS</Desc>
      </UnitOrBasisForMeasCode>
    </Weight>
  </ActualDimensions>
  <StatusInfo>
    <MatlClass>
      <AgencyQualCode>ST</AgencyQualCode>
      <TableNum>67</TableNum>
      <CodeValue>1</CodeValue>
      <Desc>PRIME</Desc>
    </MatlClass>
    <Status StatusType="Processor">
      <AgencyQualCode>ST</AgencyQualCode>
      <TableNum>70</TableNum>
      <CodeValue>7</CodeValue>
      <Desc>INPROCESS</Desc>
    </Status>
    <TimeStamp TimeStampType="Activity">
      <Date>2001.1.29</Date>
    </TimeStamp>
  </StatusInfo>
</MatlInfoLoop>
</MatlInfoLoop>
  <MatlInfo>
    <MatlId MatlIdType="Producer">A123708</MatlId>
    <MatlId MatlIdType="Processor">A123708</MatlId>
  </MatlInfo>
</MatlInfoLoop>
```



### Example: Machine-Based Version (con't)

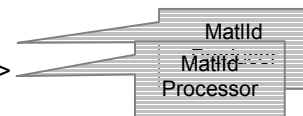
---

```
</MatlInfo>
<ActualDimensions>
  <Weight>
    <MeasValue>22870</MeasValue>
    <UnitOrBasisForMeasCode>
      <AgencyQualCode>AX</AgencyQualCode>
      <TableNum>355</TableNum>
      <CodeValue>LB</CodeValue>
      <Desc>POUNDS</Desc>
    </UnitOrBasisForMeasCode>
  </Weight>
</ActualDimensions>
<StatusInfo>
  <MatlClass>
    <AgencyQualCode>ST</AgencyQualCode>
    <TableNum>67</TableNum>
    <CodeValue>1</CodeValue>
    <Desc>PRIME</Desc>
  </MatlClass>
  <Status StatusType="Processor">
    <AgencyQualCode>ST</AgencyQualCode>
    <TableNum>70</TableNum>
    <CodeValue>7</CodeValue>
    <Desc>INPROCESS</Desc>
  </Status>
  <TimeStamp TimeStampType="Activity">
    <Date>2001.1.29</Date>
  </TimeStamp>
</StatusInfo>
</MatlInfoLoop>
</ManufacturingOrderLoop>
</Detail>
</DataArea>
</TransactionLevel>
</InventoryAdvice>
```



## Example: Text-Based Version

```
<?xml version="1.0" encoding="UTF-8"?>
<!DOCTYPE InventoryAdvice SYSTEM "InventoryAdvice.dtd">
<InventoryAdvice>
  <Interchange/>
  <TransactionLevel>
    <Control/>
    <DataArea>
      <Header>
        <ActionCode>
          <Desc>Send</Desc>
        </ActionCode>
        <ReportTransmissionCode>
          <Desc>Electronic Mail</Desc>
        </ReportTransmissionCode>
      </Header>
      <Detail>
        <ManufacturingOrderLoop>
          <ManufacturingOrder>
            <MillOrderNum>AB12300</MillOrderNum>
            <MillOrderItem>1</MillOrderItem>
            <Partner PartnerType="Processor">
              <Name>STEEL PROCESSOR</Name>
              <Addr1>123 MAIN STREET</Addr1>
              <CityName> ANY TOWN</CityName>
              <PostalCode>12345</PostalCode>
              <CountryCode>
                <Desc>USA</Desc>
              </CountryCode>
            </Partner>
            <Partner PartnerType="Supplier">
              <Name>STEEL SUPPLIER</Name>
              <Addr1>123 OLD STREET</Addr1>
              <CityName> OTHER TOWN</CityName>
              <PostalCode>12346</PostalCode>
              <CountryCode>
                <Desc>USA</Desc>
              </CountryCode>
            </Partner>
            <TimeStamp TimeStampType="Inventory">
              <Date>2001.4.17</Date>
              <Time>8:03:08</Time>
            </TimeStamp>
          </ManufacturingOrder>
          <MatlInfoLoop>
            <MatlInfo>
              <MatlId MatlIdType="Producer">A123704</MatlId>
              <MatlId MatlIdType="Processor">A123704</MatlId>
```





---

### Example: Text-Based Version (con't)

---

```
</MatlInfo>
<ActualDimensions>
  <Weight>
    <MeasValue>22770</MeasValue>
    <UnitOrBasisForMeasCode>
      <Desc>POUNDS</Desc>
    </UnitOrBasisForMeasCode>
  </Weight>
</ActualDimensions>
<StatusInfo>
  <MatlClass>
    <Desc>PRIME</Desc>
  </MatlClass>
  <Status StatusType="Processor">
    <Desc>INPROCESS</Desc>
  </Status>
  <TimeStamp TimeStampType="Activity">
    <Date>2001.1.29</Date>
  </TimeStamp>
</StatusInfo>
</MatlInfoLoop>
<MatlInfoLoop>
  <MatlInfo>
    <MatlId MatlIdType="Producer">A123705</MatlId>
    <MatlId MatlIdType="Processor">A123705-1</MatlId>
  </MatlInfo>
  <ActualDimensions>
    <Weight>
      <MeasValue>5100</MeasValue>
      <UnitOrBasisForMeasCode>
        <Desc>POUNDS</Desc>
      </UnitOrBasisForMeasCode>
    </Weight>
  </ActualDimensions>
  <StatusInfo>
    <MatlClass>
      <Desc>PRIME</Desc>
    </MatlClass>
    <Status StatusType="Processor">
      <Desc>PROCESSING COMPLETE</Desc>
    </Status>
    <TimeStamp TimeStampType="Activity">
      <Date>2001.4.02</Date>
    </TimeStamp>
  </StatusInfo>
</MatlInfoLoop>
</MatlInfoLoop>
<MatlInfo>
```

Dimension  
Weight

Status  
Processor



---

### Example: Text-Based Version (con't)

---

```
<MatlId MatlIdType="Producer">A123705</MatlId>
  <MatlId MatlIdType="Processor">A123705-2</MatlId>
</MatlInfo>
<ActualDimensions>
  <Weight>
    <MeasValue>5100</MeasValue>
    <UnitOrBasisForMeasCode>
      <Desc>POUNDS</Desc>
    </UnitOrBasisForMeasCode>
  </Weight>
</ActualDimensions>
<StatusInfo>
  <MatlClass>
    <Desc>PRIME</Desc>
  </MatlClass>
  <Status StatusType="Processor">
    <Desc>PROCESSING COMPLETE</Desc>
  </Status>
  <TimeStamp TimeStampType="Activity">
    <Date>2001.4.02</Date>
  </TimeStamp>
</StatusInfo>
</MatlInfoLoop>
<MatlInfoLoop>
  <MatlInfo>
    <MatlId MatlIdType="Producer">A123705</MatlId>
    <MatlId MatlIdType="Processor">A123705-3</MatlId>
  </MatlInfo>
  <ActualDimensions>
    <Weight>
      <MeasValue>5100</MeasValue>
      <UnitOrBasisForMeasCode>
        <Desc>POUNDS</Desc>
      </UnitOrBasisForMeasCode>
    </Weight>
  </ActualDimensions>
  <StatusInfo>
    <MatlClass>
      <Desc>PRIME</Desc>
    </MatlClass>
    <Status StatusType="Processor">
      <Desc>PROCESSING COMPLETE</Desc>
    </Status>
    <TimeStamp TimeStampType="Activity">
      <Date>2001.4.02</Date>
    </TimeStamp>
  </StatusInfo>
</MatlInfoLoop>
<MatlInfoLoop>
```

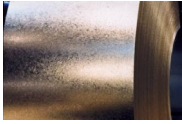


---

### Example: Text-Based Version (con't)

---

```
<MatlInfo>
  <MatlId MatlIdType="Producer">A123705</MatlId>
  <MatlId MatlIdType="Processor">A123705-4</MatlId>
</MatlInfo>
<ActualDimensions>
  <Weight>
    <MeasValue>5100</MeasValue>
    <UnitOrBasisForMeasCode>
      <Desc>POUNDS</Desc>
    </UnitOrBasisForMeasCode>
  </Weight>
</ActualDimensions>
<StatusInfo>
  <MatlClass>
    <Desc>PRIME</Desc>
  </MatlClass>
  <Status StatusType="Processor">
    <Desc>PROCESSING COMPLETE</Desc>
  </Status>
  <TimeStamp TimeStampType="Activity">
    <Date>2001.4.02</Date>
  </TimeStamp>
</StatusInfo>
</MatlInfoLoop>
<MatlInfoLoop>
  <MatlInfo>
    <MatlId MatlIdType="Producer">A123706</MatlId>
    <MatlId MatlIdType="Processor">A123706</MatlId>
  </MatlInfo>
  <ActualDimensions>
    <Weight>
      <MeasValue>23280</MeasValue>
      <UnitOrBasisForMeasCode>
        <Desc>POUNDS</Desc>
      </UnitOrBasisForMeasCode>
    </Weight>
  </ActualDimensions>
  <StatusInfo>
    <MatlClass>
      <Desc>PRIME</Desc>
    </MatlClass>
    <Status StatusType="Processor">
      <Desc>INPROCESS</Desc>
    </Status>
    <TimeStamp TimeStampType="Activity">
      <Date>2001.1.29</Date>
    </TimeStamp>
  </StatusInfo>
</MatlInfoLoop>
```

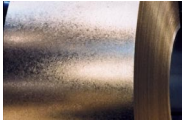


---

### Example: Text-Based Version (con't)

---

```
<MatlInfoLoop>
  <MatlInfo>
    <MatlId MatlIdType="Producer">A123707</MatlId>
    <MatlId MatlIdType="Processor">A123707</MatlId>
  </MatlInfo>
  <ActualDimensions>
    <Weight>
      <MeasValue>23180</MeasValue>
      <UnitOrBasisForMeasCode>
        <Desc>POUNDS</Desc>
      </UnitOrBasisForMeasCode>
    </Weight>
  </ActualDimensions>
  <StatusInfo>
    <MatlClass>
      <Desc>PRIME</Desc>
    </MatlClass>
    <Status StatusType="Processor">
      <Desc>INPROCESS</Desc>
    </Status>
    <TimeStamp TimeStampType="Activity">
      <Date>2001.1.29</Date>
    </TimeStamp>
  </StatusInfo>
</MatlInfoLoop>
<MatlInfoLoop>
  <MatlInfo>
    <MatlId MatlIdType="Producer">A123708</MatlId>
    <MatlId MatlIdType="Processor">A123708</MatlId>
  </MatlInfo>
  <ActualDimensions>
    <Weight>
      <MeasValue>22870</MeasValue>
      <UnitOrBasisForMeasCode>
        <Desc>POUNDS</Desc>
      </UnitOrBasisForMeasCode>
    </Weight>
  </ActualDimensions>
  <StatusInfo>
    <MatlClass>
      <Desc>PRIME</Desc>
    </MatlClass>
    <Status StatusType="Processor">
      <Desc>INPROCESS</Desc>
    </Status>
    <TimeStamp TimeStampType="Activity">
      <Date>2001.1.29</Date>
    </TimeStamp>
  </StatusInfo>
</MatlInfoLoop>
```



**Example: Text-Based Version (con't)**

---

```
</MatlInfoLoop>  
  </ManufacturingOrderLoop>  
    </Detail>  
      </DataArea>  
        </TransactionLevel>  
      </InventoryAdvice>
```



## Appendices