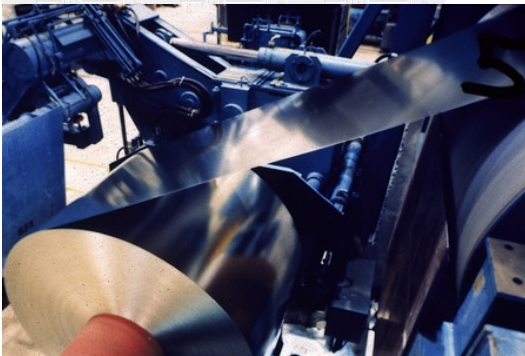


isXML: Work Order

An Industry Document Guideline for Metal Transactions

American Iron & Steel Institute

April 2001



DRAFT – Release 0.1



Published / Revised

5/2/2001

Printed
05/03/2001



Table of Contents

Topic	Page
Background	1
Transaction Description and Usage	2
Class Relationships.....	3
Document Structure	4
isXML DTD	5
Examples	6
Example: Source Document	7
Example: Machine-Based Version	10
Example: Text-Based Version.....	17
Appendices	22



Background

This document is intended to describe the ‘payload’ section of an XML-formatted ‘Work Order’ message. Message routing structures are not currently a part of these guidelines.

The **structure** of the AISI XML message is as follows:

isXML DTD

1. Interchange level (described in ‘Draft V0001 – Control.doc)
2. Transaction level
 - 2.1. Control (described in ‘Draft V0001 – Control.doc)
 - 2.2. Data Area
 - 2.2.1. Header
 - 2.2.2. Detail

As part of the methodology used to develop these guidelines, the work group mapped transaction data requirements, grouped like elements together as ‘classes’ or common components, and structured the document.

The section labeled ‘**Class Relationships**’ diagrams the document structure in terms of the identified classes or components. The section labeled ‘**Document Structure**’ further outlines the hierarchical structure of the message.

The ‘**isXML DTD**’ portion of the guideline contains the message DTD. The common class definitions have been ‘included’ in the DTD and are described in ‘Draft V0001 – Overview.doc’.

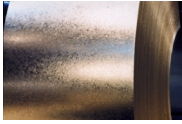
A number of sections in the guideline have been reserved for ‘examples’. The ‘source document’ is a representation of a paper document used to derive the example. The ‘machine version’ example is a fully extended version of the XML which would be used where sophisticated systems are communicating and have access to industry and society codes and table structures. Finally, the ‘text version’ example is used for a lower-tech implementation where codes and tables need not be referenced.

A tag dictionary is included in ‘Draft V0001 – Overview.doc’.



Transaction Description and Usage

This draft guideline contains the format and establishes the data content of the work order transaction set. The work order is used to communicate manufacturing instructions to toll processing facilities.



Class Relationships

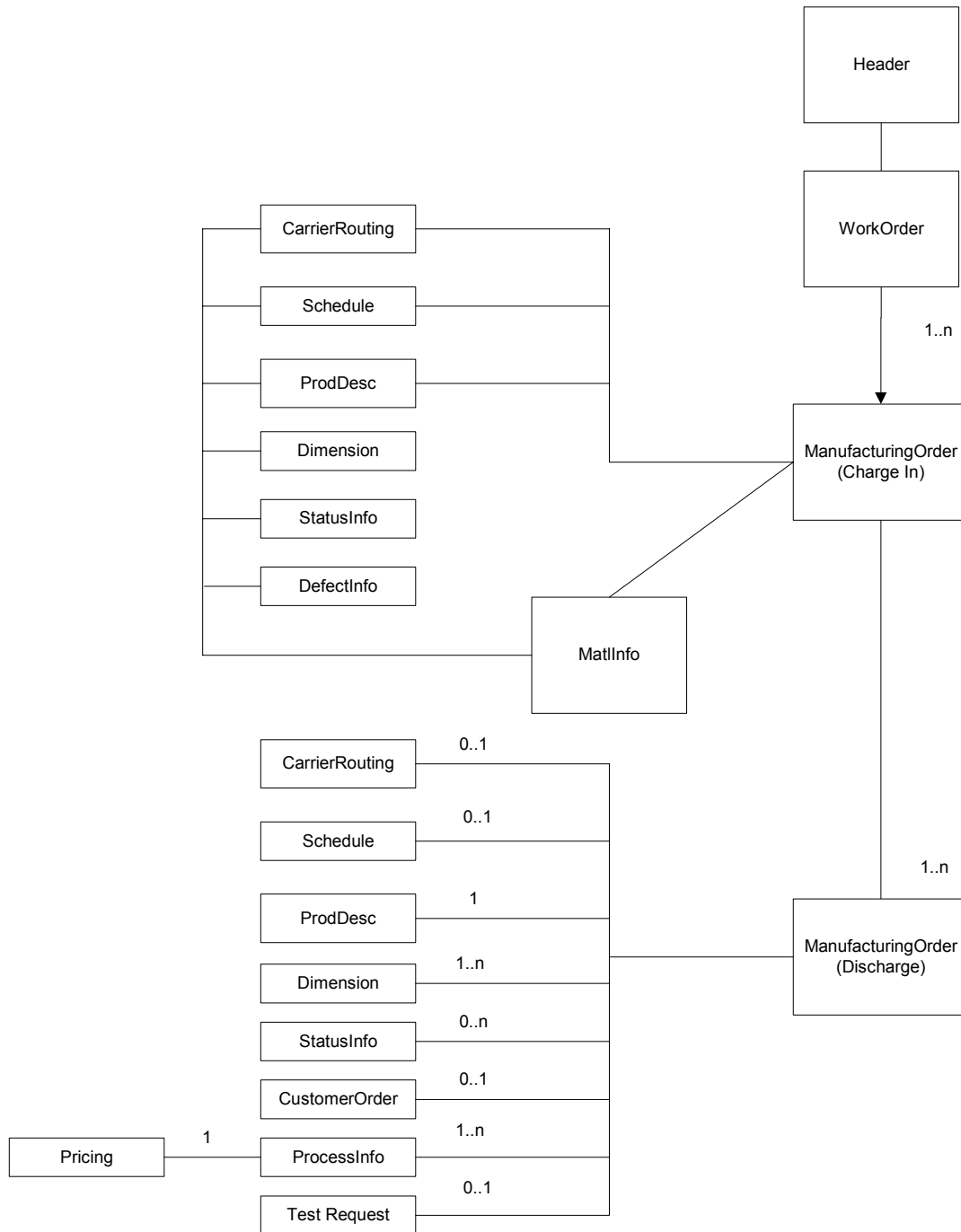
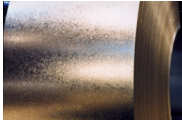


Figure 1



Document Structure

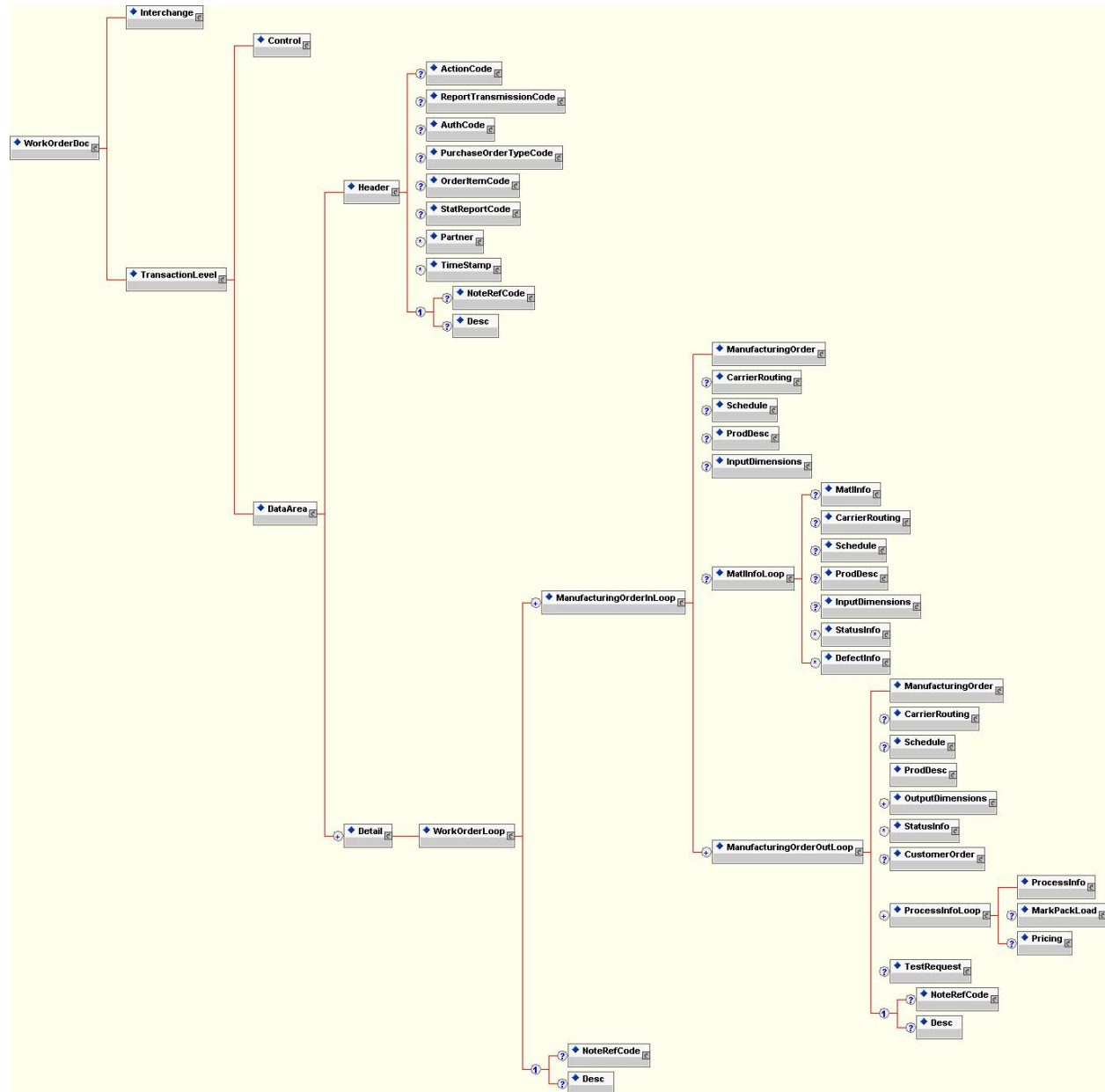
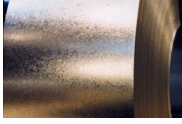


Figure 2



isXML DTD

```
<?xml version="1.0" encoding="UTF-8"?>
<!ENTITY % classcommon.dtd SYSTEM "classcommon.dtd">
%classcommon.dtd;
<!ELEMENT WorkOrderDoc (Interchange, TransactionLevel)>
<!-- Document Definition has envelope information and transaction information -->
<!ELEMENT TransactionLevel (Control, DataArea)>
<!ELEMENT DataArea (Header, Detail+)>
<!ELEMENT Detail (WorkOrderLoop)>
<!ELEMENT WorkOrderLoop (ManufacturingOrderInLoop+, Note*)>
<!ELEMENT ManufacturingOrderInLoop (ManufacturingOrder, CarrierRouting?, Schedule?, ProdDesc?,
InputDimensions?, MatlInfoLoop?, ManufacturingOrderOutLoop+)>
<!ELEMENT MatlInfoLoop (MatlInfo?, CarrierRouting?, Schedule?, ProdDesc?, InputDimensions?,
StatusInfo*, DefectInfo*)>
<!ELEMENT InputDimensions (%Dimension;)>
<!ELEMENT OutputDimensions (%Dimension;)>
<!ELEMENT ManufacturingOrderOutLoop (ManufacturingOrder, CarrierRouting?, Schedule?, ProdDesc,
OutputDimensions+, StatusInfo*, CustomerOrder?, ProcessInfoLoop+, TestRequest?, Note*)>
<!ELEMENT ProcessInfoLoop (ProcessInfo, MarkPackLoad?, Pricing?)>
```



Examples

The following are examples of the actual work order transaction in use. You will see a sample source document followed by both a machine-based and a text-based isXML example that matches the source document



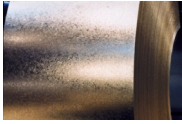
Example: Machine-Based Version

```
<?xml version="1.0" encoding="UTF-8"?>
<!DOCTYPE WorkOrderDoc SYSTEM "WorkOrder.dtd">
<WorkOrderDoc>
  <Interchange/>
  <TransactionLevel>
    <Control/>
    <DataArea>
      <Header>
        <ActionCode>
          <AgencyQualCode>AX</AgencyQualCode>
          <TableNum>306</TableNum>
          <CodeValue>5</CodeValue>
          <Desc>Send</Desc>
        </ActionCode>
        <ReportTransmissionCode>
          <AgencyQualCode>AX</AgencyQualCode>
          <TableNum>756</TableNum>
          <CodeValue>9</CodeValue>
          <Desc>Electronic Mail</Desc>
        </ReportTransmissionCode>
      </Header>
      <Detail>
        <WorkOrderLoop>
          <ManufacturingOrderInLoop>
            <ManufacturingOrder>
              <MillOrderNum>12345678</MillOrderNum>
              <Partner PartnerType="SoldTo">
                <Name>NEW STEEL CORPORATION</Name>
                <Addr1>123 EAST MAIN STREET</Addr1>
                <PostalCode>12345</PostalCode>
                <CountryCode>
                  <Desc>USA</Desc>
                </CountryCode>
              </Partner>
              <Partner PartnerType="ShipTo">
                <Name>NEW STEEL PROCESSOR</Name>
                <Addr1>C/O NEW STEEL CORP</Addr1>
                <Addr2>987 WEST MAIN STREET</Addr2>
                <PostalCode>12346</PostalCode>
                <CountryCode>
                  <Desc>USA</Desc>
                </CountryCode>
              </Partner>
              <Partner PartnerType="ManufacturingPlant">
                <Name>STEEL SUPPLIER CORPORATION</Name>
                <Addr1>1111 BIG STEEL ROAD</Addr1>
                <CityName>STEEL TOWN</CityName>
                <PostalCode>10001</PostalCode>
                <CountryCode>

```

Partner
Sold To

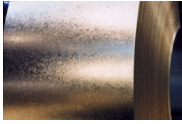
Partner
Ship To



Example: Machine-Based Version (con't)

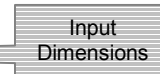
```
        <Desc>USA</Desc>
      </CountryCode>
    </Partner>
    <Partner PartnerType="Processor">
      <Name>STEEL PROCESSOR CORPORATION</Name>
      <Addr1>2222 LARGE STEEL ROAD</Addr1>
      <CityName>STEEL TOWN</CityName>
      <PostalCode>20002</PostalCode>
      <CountryCode>
        <Desc>USA</Desc>
      </CountryCode>
    </Partner>
    <TimeStamp TimeStampType="WorkOrder">
      <Date>2001.04.04</Date>
      <Time>11:00.28</Time>
    </TimeStamp>
    <Note>
      <NoteRefCode>
        <AgencyQualCode>AX</AgencyQualCode>
        <TableNum>363</TableNum>
        <CodeValue>DEL</CodeValue>
        <Desc>DELIVERY</Desc>
      </NoteRefCode>
      <Desc>REC HRS: 0730-1530 MONDAY - FRIDAY. DRIVER TO CALL: IF
ANY TROUBLE HENRIETTA 800-555-1234 FROM 0730 - 1530</Desc>
    </Note>
  </ManufacturingOrder>
  <ProdDesc>
    <ProdForm>
      <Desc>COIL</Desc>
    </ProdForm>
    <Quality>
      <AgencyQualCode/>
      <TableNum/>
      <CodeValue/>
      <Desc>CS TYPE B</Desc>
    </Quality>
    <Finish>
      <AgencyQualCode>ST</AgencyQualCode>
      <TableNum>14A</TableNum>
      <CodeValue>041</CodeValue>
      <Desc>MINIMIZED SPANGLE</Desc>
    </Finish>
    <ChemTreat>N</ChemTreat>
    <InspectInstructions>01 MILL INSPECTION</InspectInstructions>
    <Oiling>O</Oiling>
    <Note>
      <NoteRefCode>
        <AgencyQualCode>AX</AgencyQualCode>
        <TableNum>363</TableNum>
```

Partner
Processor



Example: Machine-Based Version (con't)

```
<CodeValue>ADD</CodeValue>
  <Desc>ADDITIONAL INFORMATION</Desc>
</NoteRefCode>
  <Desc>GALVANIZED SHEET CARBON PREFINISHED PAINTED</Desc>
</Note>
</ProdDesc>
<InputDimensions>
  <Thk>
    <MeasValue>.0232</MeasValue>
    <UnitOrBasisForMeasCode>
      <AgencyQualCode>AX</AgencyQualCode>
      <TableNum>355</TableNum>
      <CodeValue>IN</CodeValue>
      <Desc>INCH</Desc>
    </UnitOrBasisForMeasCode>
    <RangeMin>.0232</RangeMin>
    <RangeMax>.0262</RangeMax>
  </Thk>
  <Width>
    <MeasValue>55.6220</MeasValue>
    <UnitOrBasisForMeasCode>
      <AgencyQualCode>AX</AgencyQualCode>
      <TableNum>355</TableNum>
      <CodeValue>IN</CodeValue>
      <Desc>INCH</Desc>
    </UnitOrBasisForMeasCode>
    <RangeMin>55.6220</RangeMin>
    <RangeMax>55.7470</RangeMax>
  </Width>
  <Weight>
    <MeasRefIdCode>
      <AgencyQualCode>AX</AgencyQualCode>
      <TableNum>737</TableNum>
      <CodeValue>OD</CodeValue>
      <Desc>ORDERED DIMENSIONS</Desc>
    </MeasRefIdCode>
    <MeasQual>
      <AgencyQualCode>AX</AgencyQualCode>
      <TableNum>738</TableNum>
      <CodeValue>U</CodeValue>
      <Desc>WEIGHT PER UNIT</Desc>
    </MeasQual>
    <MeasValue>29049</MeasValue>
    <UnitOrBasisForMeasCode>
      <AgencyQualCode>AX</AgencyQualCode>
      <TableNum>355</TableNum>
      <CodeValue>LB</CodeValue>
      <Desc>POUND</Desc>
    </UnitOrBasisForMeasCode>
    <RangeMin>29049</RangeMin>
```





Example: Machine-Based Version (con't)

```
<RangeMax>32332</RangeMax>
</Weight>
<Weight>
  <MeasRefIdCode>
    <AgencyQualCode>AX</AgencyQualCode>
    <TableNum>737</TableNum>
    <CodeValue>OD</CodeValue>
    <Desc>ORDERED DIMENSIONS</Desc>
  </MeasRefIdCode>
  <MeasQual>
    <AgencyQualCode>AX</AgencyQualCode>
    <TableNum>738</TableNum>
    <CodeValue>G</CodeValue>
    <Desc>GROSS WEIGHT</Desc>
  </MeasQual>
  <MeasValue>161585</MeasValue>
  <UnitOrBasisForMeasCode>
    <AgencyQualCode>AX</AgencyQualCode>
    <TableNum>355</TableNum>
    <CodeValue>LB</CodeValue>
    <Desc>POUND</Desc>
  </UnitOrBasisForMeasCode>
</Weight>
<InsideDiam>
  <MeasValue>24.0</MeasValue>
  <UnitOrBasisForMeasCode>
    <AgencyQualCode>AX</AgencyQualCode>
    <TableNum>355</TableNum>
    <CodeValue>IN</CodeValue>
    <Desc>INCH</Desc>
  </UnitOrBasisForMeasCode>
  <RangeMin>24.0</RangeMin>
  <RangeMax>24.0</RangeMax>
</InsideDiam>
<OutsideDiam>
  <MeasValue>54.1</MeasValue>
  <UnitOrBasisForMeasCode>
    <AgencyQualCode>AX</AgencyQualCode>
    <TableNum>355</TableNum>
    <CodeValue>IN</CodeValue>
    <Desc>INCH</Desc>
  </UnitOrBasisForMeasCode>
  <RangeMin>54.1</RangeMin>
  <RangeMax>56.5</RangeMax>
</OutsideDiam>
<EdgeDesignation>
  <AgencyQualCode>ST</AgencyQualCode>
  <TableNum>22</TableNum>
  <CodeValue>34</CodeValue>
  <Desc>MILL EDGE</Desc>
```

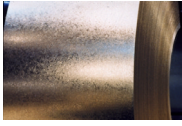


Example: Machine-Based Version (con't)

```
</EdgeDesignation>
</InputDimensions>
<ManufacturingOrderOutLoop>
  <ManufacturingOrder>
    <MillOrderNum>12345678</MillOrderNum>
    <MillOrderItem>01</MillOrderItem>
  </ManufacturingOrder>
  <ProdDesc/>
  <OutputDimensions>
    <Len>
      <MeasValue>66.258</MeasValue>
      <UnitOrBasisForMeasCode>
        <AgencyQualCode>AX</AgencyQualCode>
        <TableNum>355</TableNum>
        <CodeValue>IN</CodeValue>
        <Desc>INCH</Desc>
      </UnitOrBasisForMeasCode>
      <RangeMin>66.258</RangeMin>
      <RangeMax>66.570</RangeMax>
    </Len>
    <Thk>
      <MeasValue>.0250</MeasValue>
      <UnitOrBasisForMeasCode>
        <AgencyQualCode>AX</AgencyQualCode>
        <TableNum>355</TableNum>
        <CodeValue>IN</CodeValue>
        <Desc>INCH</Desc>
      </UnitOrBasisForMeasCode>
      <RangeMin>.0250</RangeMin>
      <RangeMax>.0290</RangeMax>
    </Thk>
    <Width>
      <MeasValue>55.542</MeasValue>
      <UnitOrBasisForMeasCode>
        <AgencyQualCode>AX</AgencyQualCode>
        <TableNum>355</TableNum>
        <CodeValue>IN</CodeValue>
        <Desc>INCH</Desc>
      </UnitOrBasisForMeasCode>
      <RangeMin>55.542</RangeMin>
      <RangeMax>55.792</RangeMax>
    </Width>
    <Weight>
      <MeasRefIdCode>
        <AgencyQualCode>AX</AgencyQualCode>
        <TableNum>737</TableNum>
        <CodeValue>OD</CodeValue>
        <Desc>ORDERED DIMENSIONS</Desc>
      </MeasRefIdCode>
      <MeasQual>

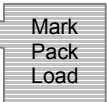
```

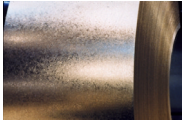
Output
Dimensions



Example: Machine-Based Version (con't)

```
<AgencyQualCode>AX</AgencyQualCode>
<TableNum>738</TableNum>
<CodeValue>G</CodeValue>
<Desc>GROSS WEIGHT</Desc>
</MeasQual>
<MeasValue>156000</MeasValue>
<UnitOrBasisForMeasCode>
  <AgencyQualCode>AX</AgencyQualCode>
  <TableNum>355</TableNum>
  <CodeValue>LB</CodeValue>
  <Desc>POUND</Desc>
</UnitOrBasisForMeasCode>
</Weight>
</OutputDimensions>
<ProcessInfoLoop>
  <ProcessInfo>
    <Process>
      <AgencyQualCode>AX</AgencyQualCode>
      <TableNum>66</TableNum>
      <CodeValue>12</CodeValue>
      <Desc>CUT TO LENGTH</Desc>
    </Process>
    <TimeStamp TimeStampType="WorkOrder">
      <Date>2001.01.07</Date>
    </TimeStamp>
    <CoatingInfo>
      <CoatWeight>
        <MeasValue>G60</MeasValue>
        <UnitOrBasisForMeasCode>
          <AgencyQualCode>AX</AgencyQualCode>
          <TableNum>355</TableNum>
          <CodeValue>37</CodeValue>
          <Desc>OUNCES PER SQUARE FOOT</Desc>
        </UnitOrBasisForMeasCode>
      </CoatWeight>
    </CoatingInfo>
    <Note>
      <NoteRefCode>
        <AgencyQualCode>AX</AgencyQualCode>
        <TableNum>363</TableNum>
        <CodeValue>ADD</CodeValue>
        <Desc>ADDITIONAL INFORMATION</Desc>
      </NoteRefCode>
      <Desc>MAX PICKLE LINE WELDS 2, TOTAL MAX WELDS 2</Desc>
    </Note>
  </ProcessInfo>
  <MarkPackLoad>
    <MarkCodeType>
      <Desc>PACKPRNT*2P11P2</Desc>
    </MarkCodeType>
```





Example: Machine-Based Version (con't)

```
        </MarkPackLoad>
      </ProcessInfoLoop>
    </ManufacturingOrderOutLoop>
  </ManufacturingOrderInLoop>
</WorkOrderLoop>
</Detail>
</DataArea>
</TransactionLevel>
</WorkOrderDoc>
```



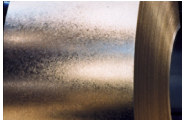
Example: Text-Based Version

```
<?xml version="1.0" encoding="UTF-8"?>
<!DOCTYPE WorkOrderDoc SYSTEM "WorkOrder.dtd">
<WorkOrderDoc>
  <Interchange/>
  <TransactionLevel>
    <Control/>
    <DataArea>
      <Header>
        <ActionCode>
          <Desc>Send</Desc>
        </ActionCode>
        <ReportTransmissionCode>
          <Desc>Electronic Mail</Desc>
        </ReportTransmissionCode>
      </Header>
      <Detail>
        <WorkOrderLoop>
          <ManufacturingOrderInLoop>
            <ManufacturingOrder>
              <MillOrderNum>12345678</MillOrderNum>
              <Partner PartnerType="SoldTo">
                <Name>NEW STEEL CORPORATION</Name>
                <Addr1>123 EAST MAIN STREET</Addr1>
                <PostalCode>12345</PostalCode>
                <CountryCode>
                  <Desc>USA</Desc>
                </CountryCode>
              </Partner>
              <Partner PartnerType="ShipTo">
                <Name>NEW STEEL PROCESSOR</Name>
                <Addr1>C/O NEW STEEL CORP</Addr1>
                <Addr2>987 WEST MAIN STREET</Addr2>
                <PostalCode>12346</PostalCode>
                <CountryCode>
                  <Desc>USA</Desc>
                </CountryCode>
              </Partner>
              <Partner PartnerType="ManufacturingPlant">
                <Name>STEEL SUPPLIER CORPORATION</Name>
                <Addr1>1111 BIG STEEL ROAD</Addr1>
                <CityName>STEEL TOWN</CityName>
                <PostalCode>10001</PostalCode>
                <CountryCode>
                  <Desc>USA</Desc>
                </CountryCode>
              </Partner>
              <Partner PartnerType="Processor">
                <Name>STEEL PROCESSOR CORPORATION</Name>
                <Addr1>2222 LARGE STEEL ROAD</Addr1>
```

Partner
Sold To

Partner
Ship To

Partner
Processor



Example: Text-Based Version (con't)

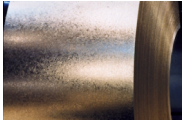
```

    <CityName>STEEL TOWN</CityName>
    <PostalCode>20002</PostalCode>
    <CountryCode>
      <Desc>USA</Desc>
    </CountryCode>
  </Partner>
  <TimeStamp TimeStampType="WorkOrder">
    <Date>2001.04.04</Date>
    <Time>11:00.28</Time>
  </TimeStamp>
  <Note>
    <NoteRefCode>
      <Desc>DELIVERY</Desc>
    </NoteRefCode>
    <Desc>REC HRS: 0730-1530 MONDAY - FRIDAY. DRIVER TO CALL: IF
ANY TROUBLE HENRIETTA 800-555-1234 FROM 0730 - 1530</Desc>
  </Note>
</ManufacturingOrder>
<ProdDesc>
  <ProdForm>
    <Desc>COIL</Desc>
  </ProdForm>
  <Quality>
    <Desc>CS TYPE B</Desc>
  </Quality>
  <Finish>
    <Desc>MINIMIZED SPANGLE</Desc>
  </Finish>
  <ChemTreat>N</ChemTreat>
  <InspectInstructions>01 MILL INSPECTION</InspectInstructions>
  <Oiling>O</Oiling>
  <Note>
    <NoteRefCode>
      <Desc>ADDITIONAL INFORMATION</Desc>
    </NoteRefCode>
    <Desc>GALVANIZED SHEET CARBON PREFINISHED PAINTED</Desc>
  </Note>
</ProdDesc>
<InputDimensions>
  <Thk>
    <MeasValue>.0232</MeasValue>
    <UnitOrBasisForMeasCode>
      <Desc>INCH</Desc>
    </UnitOrBasisForMeasCode>
    <RangeMin>.0232</RangeMin>
    <RangeMax>.0262</RangeMax>
  </Thk>
  <Width>
    <MeasValue>55.6220</MeasValue>
    <UnitOrBasisForMeasCode>

```

Partner
Processor

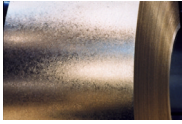
Input
Dimensions



Example: Text-Based Version (con't)

```
<Desc>INCH</Desc>
</UnitOrBasisForMeasCode>
<RangeMin>55.6220</RangeMin>
<RangeMax>55.7470</RangeMax>
</Width>
<Weight>
  <MeasRefIdCode>
    <Desc>ORDERED DIMENSIONS</Desc>
  </MeasRefIdCode>
  <MeasQual>
    <Desc>WEIGHT PER UNIT</Desc>
  </MeasQual>
  <MeasValue>29049</MeasValue>
  <UnitOrBasisForMeasCode>
    <Desc>POUND</Desc>
  </UnitOrBasisForMeasCode>
  <RangeMin>29049</RangeMin>
  <RangeMax>32332</RangeMax>
</Weight>
<Weight>
  <MeasRefIdCode>
    <Desc>ORDERED DIMENSIONS</Desc>
  </MeasRefIdCode>
  <MeasQual>
    <Desc>GROSS WEIGHT</Desc>
  </MeasQual>
  <MeasValue>161585</MeasValue>
  <UnitOrBasisForMeasCode>
    <Desc>POUND</Desc>
  </UnitOrBasisForMeasCode>
</Weight>
<InsideDiam>
  <MeasValue>24.0</MeasValue>
  <UnitOrBasisForMeasCode>
    <Desc>INCH</Desc>
  </UnitOrBasisForMeasCode>
  <RangeMin>24.0</RangeMin>
  <RangeMax>24.0</RangeMax>
</InsideDiam>
<OutsideDiam>
  <MeasValue>54.1</MeasValue>
  <UnitOrBasisForMeasCode>
    <Desc>INCH</Desc>
  </UnitOrBasisForMeasCode>
  <RangeMin>54.1</RangeMin>
  <RangeMax>56.5</RangeMax>
</OutsideDiam>
<EdgeDesignation>
  <Desc>MILL EDGE</Desc>
</EdgeDesignation>
```

Partner
Processor



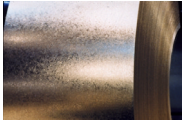
Example: Text-Based Version (con't)

```
</InputDimensions>
<ManufacturingOrderOutLoop>
  <ManufacturingOrder>
    <MillOrderNum>12345678</MillOrderNum>
    <MillOrderItem>01</MillOrderItem>
  </ManufacturingOrder>
  <ProdDesc/>
  <OutputDimensions>
    <Len>
      <MeasValue>66.258</MeasValue>
      <UnitOrBasisForMeasCode>
        <Desc>INCH</Desc>
      </UnitOrBasisForMeasCode>
      <RangeMin>66.258</RangeMin>
      <RangeMax>66.570</RangeMax>
    </Len>
    <Thk>
      <MeasValue>.0250</MeasValue>
      <UnitOrBasisForMeasCode>
        <Desc>INCH</Desc>
      </UnitOrBasisForMeasCode>
      <RangeMin>.0250</RangeMin>
      <RangeMax>.0290</RangeMax>
    </Thk>
    <Width>
      <MeasValue>55.542</MeasValue>
      <UnitOrBasisForMeasCode>
        <Desc>INCH</Desc>
      </UnitOrBasisForMeasCode>
      <RangeMin>55.542</RangeMin>
      <RangeMax>55.792</RangeMax>
    </Width>
    <Weight>
      <MeasRefldCode>
        <Desc>ORDERED DIMENSIONS</Desc>
      </MeasRefldCode>
      <MeasQual>
        <Desc>GROSS WEIGHT</Desc>
      </MeasQual>
      <MeasValue>156000</MeasValue>
      <UnitOrBasisForMeasCode>
        <Desc>POUND</Desc>
      </UnitOrBasisForMeasCode>
    </Weight>
  </OutputDimensions>
  <ProcessInfoLoop>
    <ProcessInfo>
      <Process>
        <Desc>CUT TO LENGTH</Desc>
      </Process>
    </ProcessInfo>
  </ProcessInfoLoop>
</ManufacturingOrderOutLoop>
```

Partner Processor

Output Dimensions

Processing Instructions

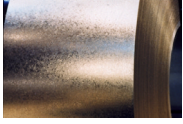


Example: Text-Based Version (con't)

```
<TimeStamp TimeStampType="WorkOrder">
  <Date>2001.01.07</Date>
</TimeStamp>
<CoatingInfo>
  <CoatWeight>
    <MeasValue>G60</MeasValue>
    <UnitOrBasisForMeasCode>
      <Desc>OUNCES PER SQUARE FOOT</Desc>
    </UnitOrBasisForMeasCode>
  </CoatWeight>
</CoatingInfo>
<Note>
  <NoteRefCode>
    <Desc>ADDITIONAL INFORMATION</Desc>
  </NoteRefCode>
  <Desc>MAX PICKLE LINE WELDS 2, TOTAL MAX WELDS 2</Desc>
</Note>
</ProcessInfo>
<MarkPackLoad>
  <MarkCodeType>
    <Desc>PACKPRNT*2P11P2</Desc>
  </MarkCodeType>
</MarkPackLoad>
</ProcessInfoLoop>
</ManufacturingOrderOutLoop>
</ManufacturingOrderInLoop>
</WorkOrderLoop>
</Detail>
</DataArea>
</TransactionLevel>
</WorkOrderDoc>
```

Partner Processor

Mark Pack Load



Appendices